

# Southeast Toyota Spray-on Bed Liner

Small Damage  
Repair Work Instructions

# Dealership/Bodyshop Repair Process

## Small Damage Repair Instructions

**IMPORTANT! – Assemble all tools/items before starting repair**

- **Items Required**

- 

- Razor Knife

- Flat Blade Screwdriver

- Prep solvent such as lacquer thinner and clean lint free cloth

- Gloves

- Safety Goggles

Sr. Nos.	Part #	Part Description
1.	A-TAREPAIRKIT	Repair Kit (Dual Cartridge Caulk Gun, 100 ml ABRM Cartridge, 5 Static Mixers, Texture Pad, Conditioner)
2.	00012-T-0990-23	Dual Cartridge Caulk Gun
3.	QF-100	100 ml ABRM Cartridge
4.	P-7700846	Static Mixer Tips
5.	CO-50321SET	Conditioner <i>(not required for repair but can help original finish match repair)</i>
6.	P-5284010	Texture Pad

Note: Parts can be ordered by visiting [www.setoyotabedlinerrepair.com](http://www.setoyotabedlinerrepair.com) and selecting the Order Parts tab

# Step 1

- Use a utility knife and/or screwdriver to remove any debris and loose material from repair area
- Use a prep solvent to clean the area and allow to dry
- Place a towel next to the repair area
- Shake the cartridge material to ensure proper mix and insert into gun



# Step 2

- Prime the mixing tip away from the repair area (on towel)
- Pump the cartridge at least 3 times and ensure there are no striations in the material to verify proper mix



**Note: When mixed correctly material should be solid black  
If material is any other color, check for obstructions in the tube/applicator**



# Step 3

- Moving the towel to the repair area, use a slow bead to fill the entire repair area
- Fill the area from the outer edges, spiraling into the center and moving back to the towel leaving no tail of the material on the repair area



**Note: It is better to slightly overfill repair area than not fill enough**  
**Recommended time between application and texturing is 30 sec – 3 mins**

# Step 4

- Place texture pad over repair area and apply firm and even pressure, for a minimum of 2 minutes and maximum of 4 minutes

**Tech Tip: Using a small block such as a piece of 2X4 wood allows for even pressure distribution**



# Step 5

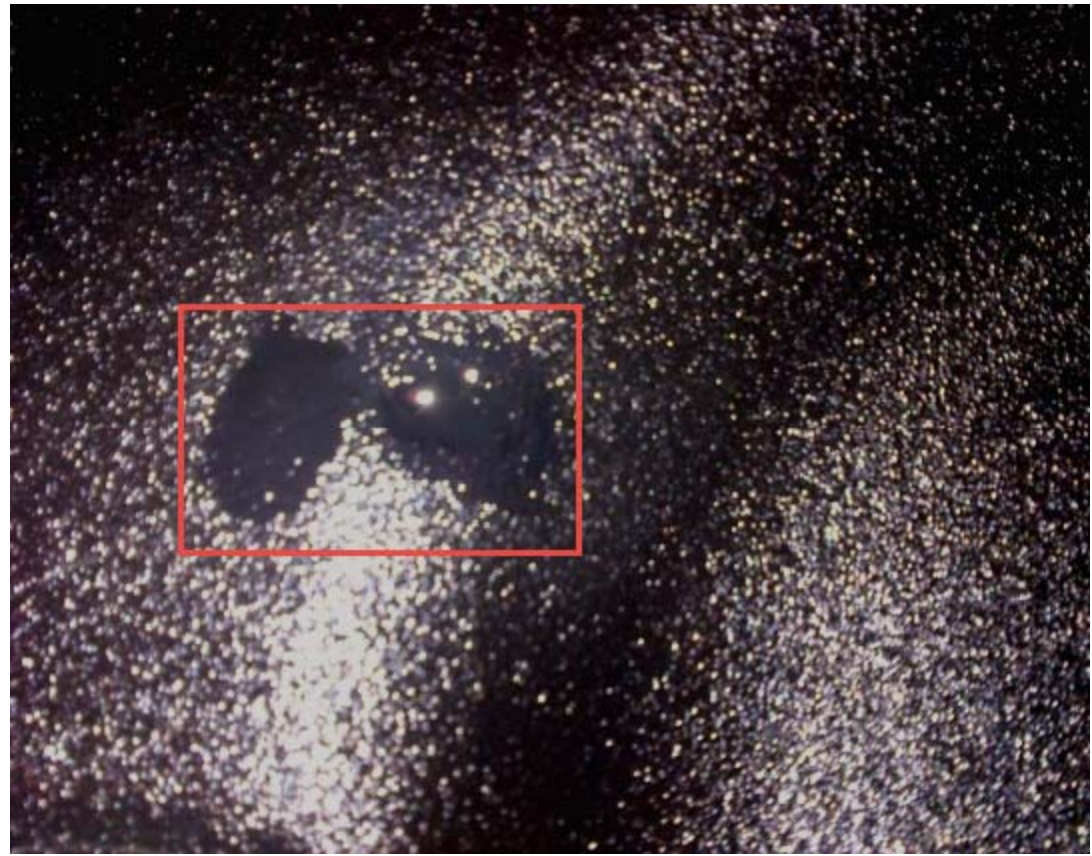
- Release pressure and slowly remove texture pad
- If any material sticks to pad, it can be removed once dry





# IMPORTANT

- If material does not set in 2 minutes or does not harden in 30 minutes, the A and B portion of the repair material did not mix properly
- If this occurs, clean the affected area with solvent and reapply repair material using a new tip (ensure mix is black in color)
- If repair area is overfilled, the edges can be feathered out using edge of texture pad
- When completed, wait ~10 minutes before applying bed liner conditioner to repaired area







- Long tears are handled in the same way but braking down into smaller sections to allow enough time to complete within the cure time of the material and to be small enough to be covered by the texture pad
- Left over material can be kept properly sealed for up to 30 days

# Parts Information

Sr. Nos.	Part #	Part Description
1.	A-TAREPAIRKIT	<b>Repair Kit</b> (Dual Cartridge Caulk Gun, 100 ml ABRM Cartridge, 5 Static Mixers, Texture Pad, Conditioner)
2.	00012-T-0990-23	Dual Cartridge Caulk Gun
3.	QF-100	100 ml ABRM Cartridge
4.	P-7700846	Static Mixer Tips
5.	CO-50321SET	Conditioner <i>(not required for repair but can help original finish match repair)</i>
6.	P-5284010	Texture Pad

Parts can be ordered by visiting [www.setoyotabedlinerrepair.com](http://www.setoyotabedlinerrepair.com)  
and selecting the order parts tab